



£180,000

Bentinck Terrace, Warsop, Mansfield,

Welcome to **BuckleyBrown**, where every home is carefully presented, so you can explore with clarity and confidence.

**BuckleyBrown**  
ESTATE AGENTS

"Tucked away at the end of a quiet cul-de-sac, this beautifully presented home offers stylish, comfortable living. The open-plan kitchen and dining area flows seamlessly onto a sunny south-facing garden—perfect for relaxing or entertaining guests."

Tim, Valuer



## THE PERFECT PLACE TO CALL HOME

*Spacious three-bedroom semi-detached home, ideal for first-time buyers looking for comfort and potential.*

From the moment you approach this three-bedroom semi-detached home, its kerb appeal and welcoming presence are immediately apparent. Inside, you will find a superbly presented property offering a seamless blend of practicality and style, with well-proportioned accommodation that easily adapts to suit a variety of lifestyles.



## THE FINER DETAILS

*This three-bedroom semi-detached property is situated in the popular village of Warsop and offers well-proportioned accommodation, ideal for a range of buyers including first-time purchasers, families, or those looking to downsize.*

The ground floor comprises an entrance hall leading into a comfortable living room, creating a welcoming space for relaxation. To the rear, there is a modern open plan kitchen/diner, providing an excellent area for both everyday living and entertaining, with direct access and a sociable layout.

To the first floor, the property offers three well-sized bedrooms along with a family bathroom, providing practical and balanced accommodation for modern living.

Externally, to the front of the property there is a shared driveway alongside a gravelled frontage, offering off-road parking. To the rear, the garden features a patio seating area and a well-maintained lawn, creating a pleasant and usable outdoor space.





**BuckleyBrown**  
ESTATE AGENTS







## LIFE IN WARSOP

***Warsop is a well-established and popular village in north Nottinghamshire, offering a semi-rural setting with a strong community feel.***

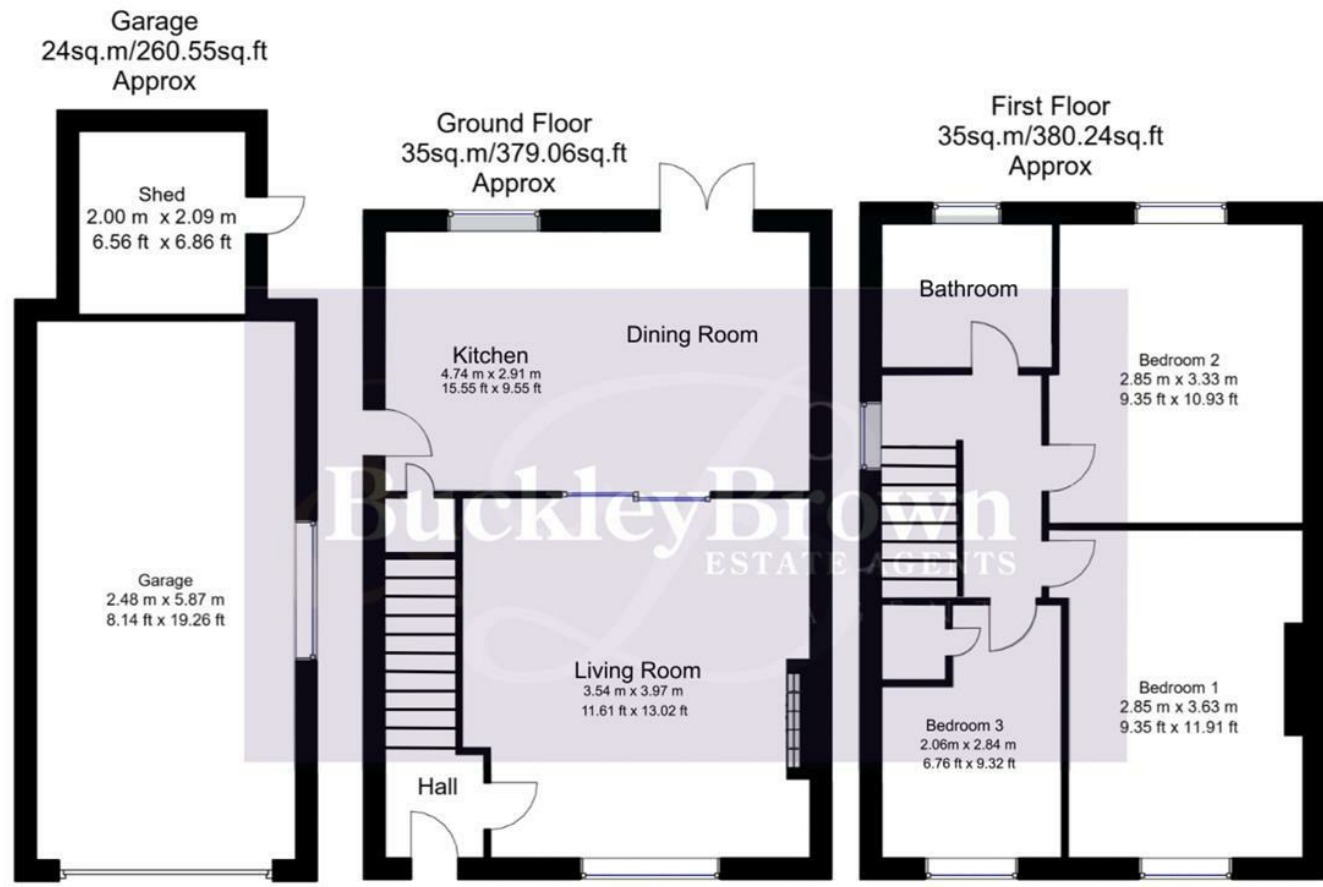
It is conveniently located close to Mansfield and within reach of Worksop, making it an attractive option for a range of buyers looking for village living with good nearby connections.

The village provides a good selection of local amenities including shops, schools, pubs, and everyday services, along with nearby recreational spaces and access to surrounding countryside. Areas such as Sherwood Forest are within easy reach, offering excellent opportunities for walking and outdoor activities.

Warsop benefits from good road links, with easy access to the A60 and A1, providing connections to Nottingham, Sheffield, and other surrounding towns. Mansfield is just a short drive away, offering a wider range of shopping and leisure facilities.

Overall, Warsop offers a balance of village life and convenience, with local amenities, countryside access, and strong transport links all contributing to its appeal.





Whilst every attempt has been made to ensure the accuracy of the floor plan contained here, no responsibility is taken for incorrect measurements of doors, windows, appliances and room or any error, omission or misstatement. Exterior and interior walls are drawn to scale based on interior measurements. Any figure given is for initial guidance only and should not be relied on as basis of valuation. These plans are for marketing purposes only and should be used as such by any prospective purchase. Specially no guarantee is should not be relied on as a basis of valuation. These plans are for marketing purposes only and should be used as such by any prospective purchase. Specifically no guarantee is given on the total square footage of the property if quoted on this plan.

## Key Features

Three-bedroom semi-detached home in the popular village of Warsop

Well-proportioned accommodation, ideal for a range of buyers

Entrance hall leading to a comfortable living room

Modern open plan kitchen/diner to the rear blautet

Rear garden with patio seating area

Well-maintained lawn offering a pleasant outdoor space



These particulars are intended as a guide only and do not form part of any offer or contract. All descriptions, measurements, images and plans are provided for illustration purposes and should not be relied upon as statements of fact. Prospective purchasers should satisfy themselves as to the accuracy of the information. Buckley Brown Estate Agents accept no liability for any loss arising from reliance on these details.

© Buckley Brown Estate Agents 2026. All rights reserved.

Exceptional homes deserve  
exceptional representation.

Let's Chat.

01623 633633

[mansfield@buckleybrown.co.uk](mailto:mansfield@buckleybrown.co.uk)

[buckleybrown.co.uk](https://www.buckleybrown.co.uk)

**BuckleyBrown**  
ESTATE AGENTS